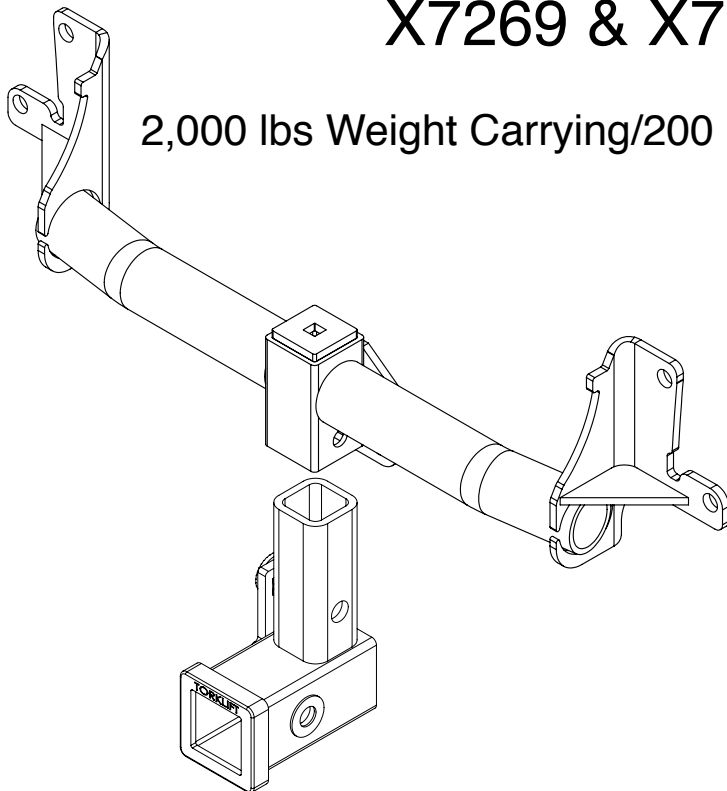




# Installation Instructions

2" & 1.25" EcoHitch Invisi

Application Fits  
2013+ BMW X1  
X7269 & X7270



2,000 lbs Weight Carrying/200 lbs Tongue Weight

Torklift Central  
315 Central Ave N  
Kent, WA 98032  
253-854-1832  
[www.torkliftcentral.com](http://www.torkliftcentral.com)  
[support@tlcentral.com](mailto:support@tlcentral.com)

**Stay Connected**



torkliftcentral



torkliftcentral



tlcentral



torklift central



torklift central



*Bolt Kit Weight:365g+/-*

*Hardware Included*

QTY Fastener

- 1 1/2" Lock Washer
- 4 1/2" SAE Hardened Flat Washer
- 3 1/2" Grade 5 Hex Nut
- 1 1/2" x 3.5"-13 Grade 5 Carriage Bolt
- 1 5/8" Lock Washer
- 1 5/8" SAE Hardened Flat Washer
- 1 5/8" x 3.5"-11 Grade 5 Hex Cap Screw
- 8 Push Pin Clips
- 1 Bent Hanger Plate
- 1 Flat Hanger Plate

**READ THESE INSTRUCTIONS THOROUGHLY BEFORE BEGINNING INSTALLATION!**

**Step 1.** Raise vehicle on suitable jack stands or hoist.

**Step 2.** Remove rivets in passenger side rear wheel well by pressing into center to break through or drilling center of pin, then remove and discard. These will be replaced with provided push pin clips later. Repeat on driver side. See Figure [1].



Fig [1]

**Step 3.** Remove lag screws in passenger side and driver side wheel well, as well as along the underside of the bumper fascia. See Figures [2],[3],[4],[5].



Fig [2]

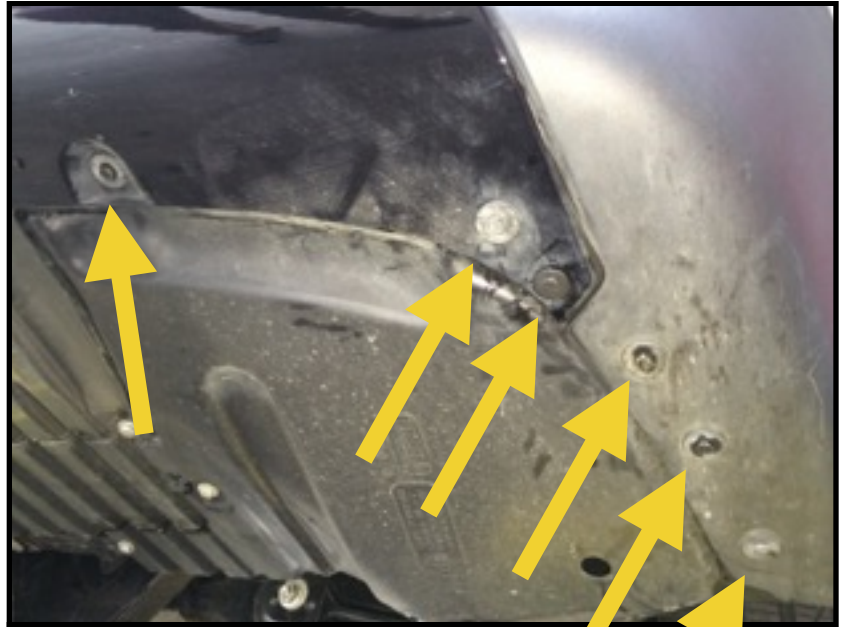


Fig [3]



Fig [4]

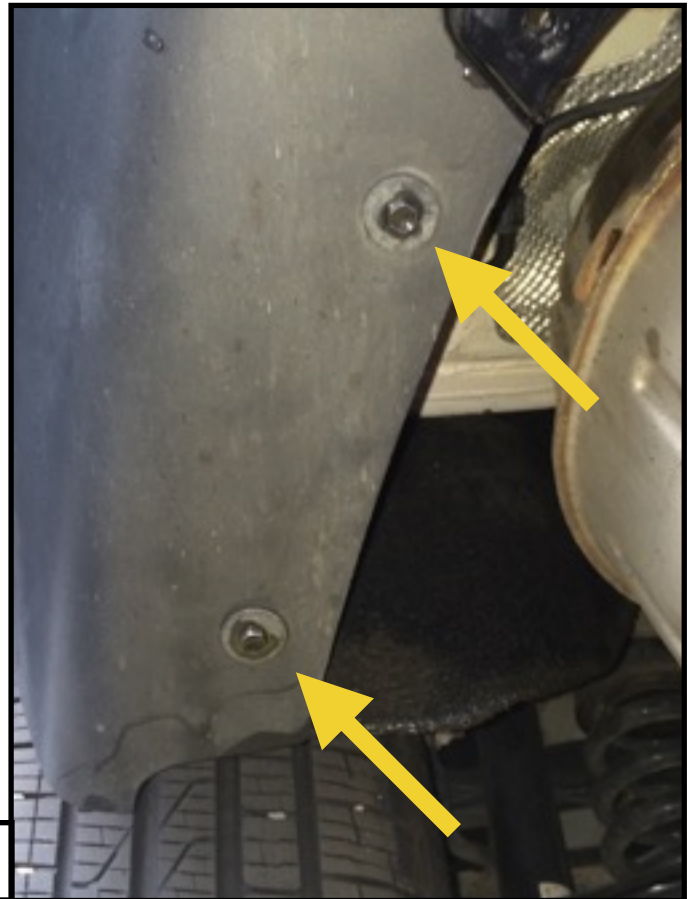


Fig [5]

**Step 4.** Peel back passenger wheel well pad (See Figure [6]) and release wheel well trim tabs. See Figure [7] for trim tab placements as noted by solid arrows. Repeat on driver side.

**Do not remove this trim completely! Only release the two tabs!**

**Step 5.** With the trim peeled back, remove the one screw as noted by the dashed arrow in Figure [7].



Fig [6]



Fig [7]

**Step 6.** Open the lift gate. On the passenger side wall you will notice a small light assembly access panel (See Figure [8]). Open this panel and gently move the green fuel cable off the hangar clips (See Figure [9]), then remove three nuts holding the light assembly in place. See Figure [10]. Repeat on driver side.



Fig [8]



Fig [9]



Fig [10]

**Step 7.** Disconnect wiring plug from light assembly and gently pull out and set aside. See dashed arrow in Figure [10].

**Step 8.** Starting on the passenger side wheel well, gently peel the bumper fascia outward working your way toward the back of the vehicle. As you round the corner, you will notice two tabs where the light assemblies were (See Figure [12]). Use a flathead screwdriver to release these tabs. Move to the driver side and repeat this bumper removal process. Finally continue peeling back the bumper fascia at the rear by pulling it rearward. See Figure [11]

**Use caution when removing bumper fascia as back-up sensors are attached to bumper fascia.**



Fig [11]

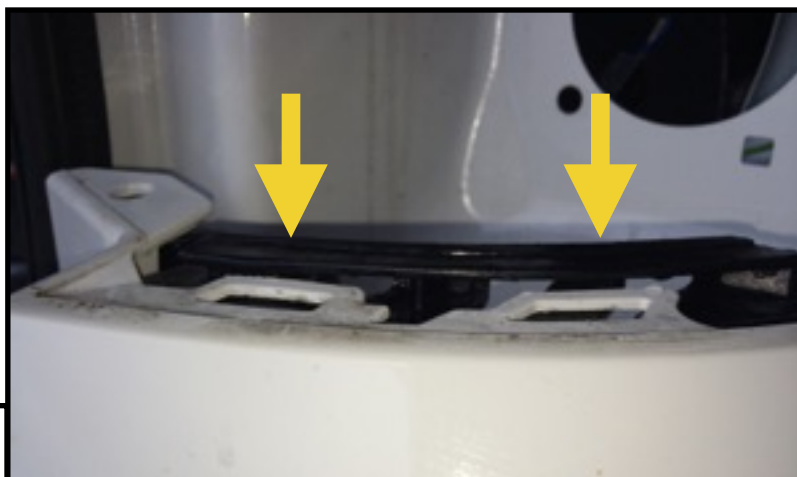


Fig [12]

**Step 9.** Disconnect the four backup sensors attached to the bumper fascia.  
Set aside the bumper fascia. See Figure [13].  
Figure [14] shows vehicle with the first ten steps completed.

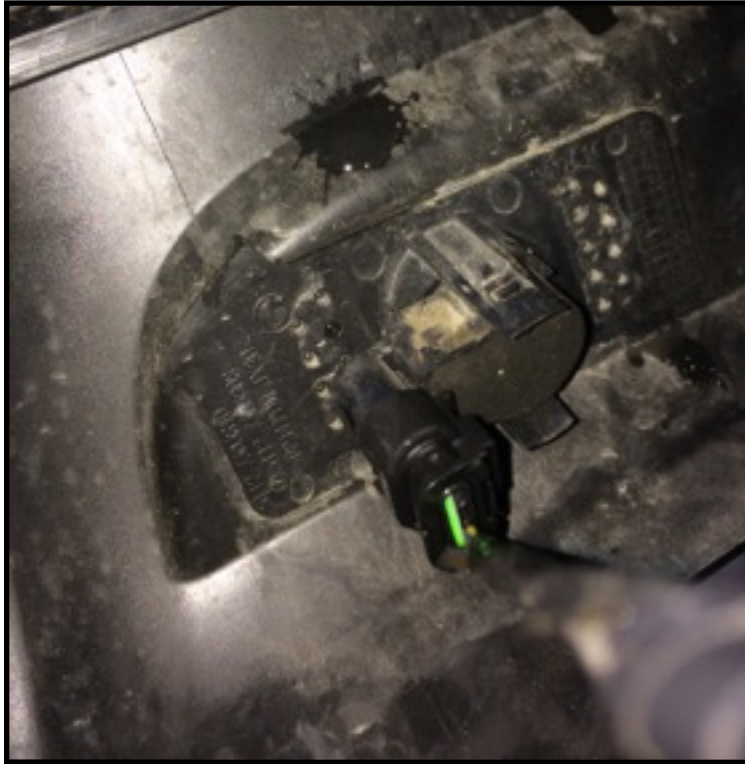


Fig [13]



Fig [14]

**Step 10.** Lower exhaust by using a lubricant such as WD-40 or equivalent to remove rubber exhaust hanger. See Figure [15].



Fig [15]

**Step 11.** Remove crush bar by removing 3 nuts on passenger and driver side that are accessible through maintenance holes. See Figure [16].

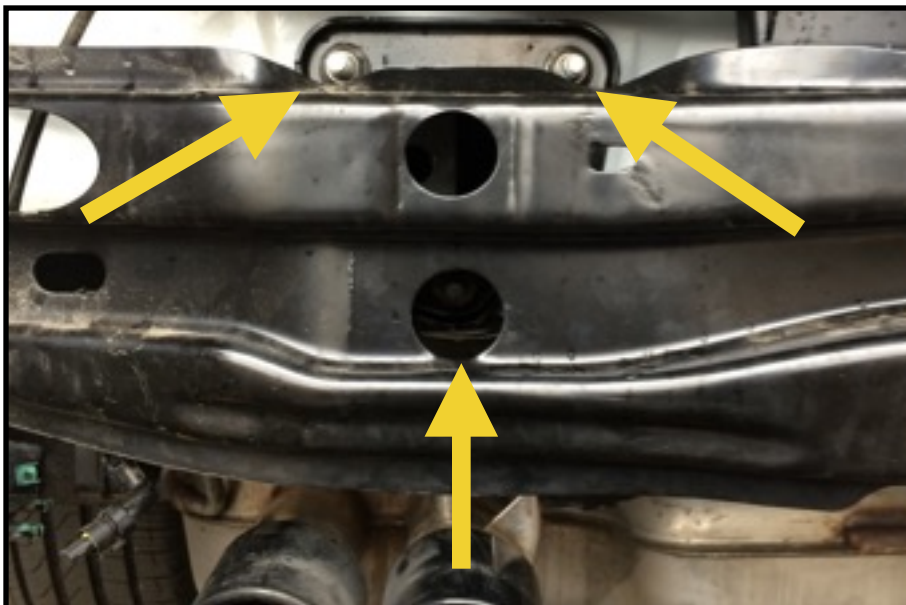


Fig [16]



**Step 12.** Place crush bar upside down on work surface. See Figure [19]. Insert hitch into crush bar with part number upside down. It may require a small amount of force to work the hitch into position on the crush bar. See Figures [17],[18],[19].



Fig [17]



Fig [18]



Fig [19]

**Step 13.** Once hitch is in place in the crush bar and with assembly still upside down, place the 1/2" x 3.5" carriage bolt through the hole in the adapter receiver slot of the hitch and secure with a 1/2" SAE Hardened Flat Washer and 1/2" Nut and torque to 55ft lbs. See Figure [20],[21],[22].

**Note: Figure [22] shows Hitch/Crush Bar Assembly right side up.**

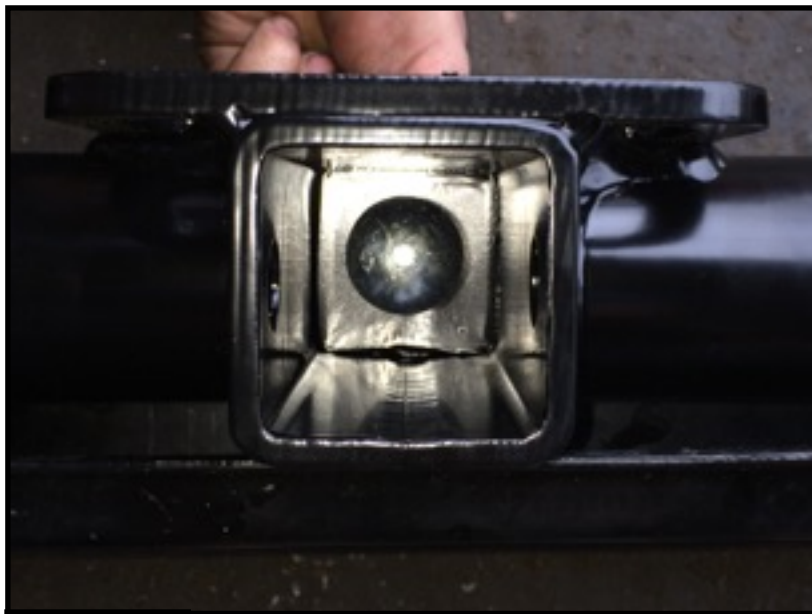


Fig [20]



Fig [21]



Fig [22]

**Step 14.** With the Hitch/Crush Assembly now right side up (See Figure [22]) screw on a 1/2" nut, then attach a 1/2" SAE hardened flat washer.

Place the Bent Hanger Plate on next, hooking the bent portion of the plate into the crush bumper. Place a 1/2" SAE hardened flat washer, Flat Hanger Plate, 1/2" SAE hardened flat washer, 1/2" lock washer, and secure with a 1/2" hex nut. See Figure [23] and [24]. Figure [25] shows a cross section of what the finished assembly will look like.

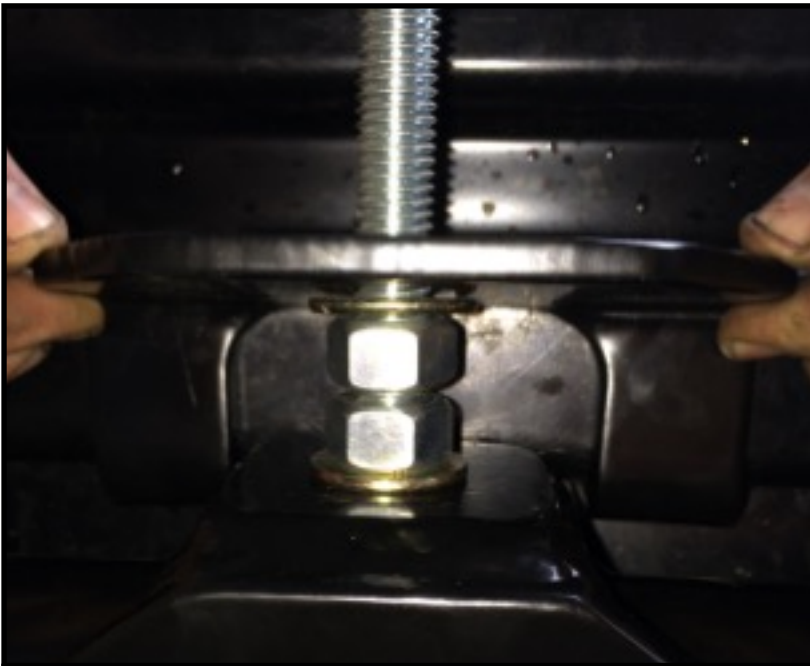


Fig [23]

Fig [24]

Hanger/Carriage Bolt Assembly will clamp to Crush Bar as shown here.

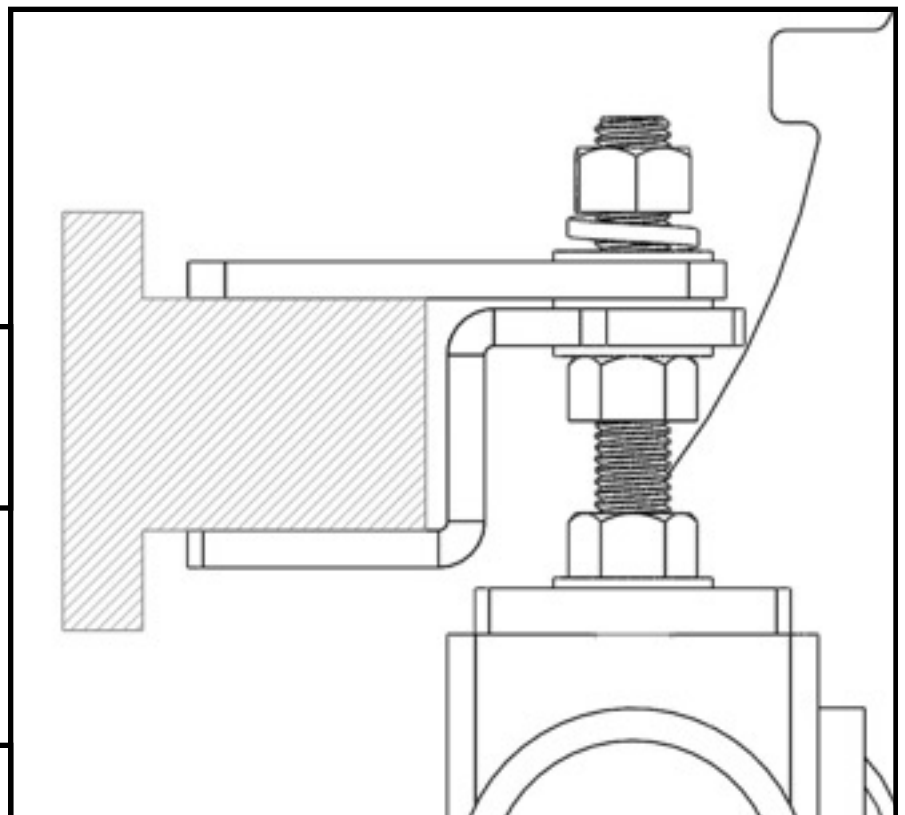


Fig [25]

**Step 15.** Once Hitch/Crush Bar Assembly is completed, replace back on to vehicle and torque metric nuts to 82ft lbs.

**Step 16.** Torque Hanger/Carriage Bolt Assembly to 55ft lbs.

**Step 17.** Reinstall bumper fascia and light assemblies by following directions in reverse starting from Step 10.

**Step 18.** Once you have reached Step 2 to reinstall push pin clips in wheel wells, use provided push pin clips. See Figures [26],[27],[28].



Fig [26]



Fig [27]



Fig [28]

**Step 19.** After hitch is installed and bumper fascia is in place, you can now attach the receiver adapter into the hitch and secure it with the provided 5/8" x 3.5" bolt, 5/8" lock washer, and 5/8" SAE flat washer. Secure by tightening hardware until lock washer is crushed.



**Congratulations on the completed installation of the BMW X1 Invisi EcoHitch! It is designed with a lifetime warranty for a lifetime of enjoyment. If you have any questions or suggestions please do not hesitate to contact our tech support at [support@tlcentral.com](mailto:support@tlcentral.com) or by phone at (253)-854-1832.**

# WARRANTY/DISCLAIMER INFORMATION

Torklift Central requires proof of purchase for warranty claim registration, with pictures of any defective product before issuing a replacement. Torklift will not accept claims on any product without proof of purchase, which can be faxed, scanned, emailed or mailed to the information provided below. Torklift Central warrants its hitches, custom hitch receivers and accessories (excluding electrical wire harnesses which carry a warranty from their specified manufacturer) from date of purchase against defects in material and workmanship under normal use and service for the ownership life of the original consumer purchaser. Torklift Central will replace free of charge any part that proves defective in material or workmanship when presented to Torklift Central, transportation charges prepaid by purchaser, at the address below. **This warranty is limited to defective parts replacement only. Labor charges and/or damage incurred in installation or replacement, as well as incidental and consequential damages connected therewith are excluded.** This warranty does not include normal wear and tear or the finish and paint. Rusting, cracking or peeling of the finish is also excluded. Some states do not allow the exclusion or limitation of incidental or consequential damages, so the above limitation or exclusion may not apply to you. Any damage to Torklift Central products as a result of misuse, abuse, neglect, accident, improper installation or any use violative of instructions furnished by Torklift Central will void the warranty. This warranty gives you specific legal rights and you may also have rights, which vary from state to state. With warranty service, you may be able to go to a small claims court, a state court or a federal district court.

Although Torklift Central trailer hitches are both tested and rated for towing within the specific capacity label found on each trailer hitch. Torklift Central assumes no liability for vehicle manufacturers warranty due to the use of a Torklift Central trailer hitch being used for towing behind any vehicle or using the trailer hitch in a manner that it was not designed for. Although this specific trailer hitch has a load rating, which includes trailer tongue weight, and a trailer weight carrying capacity, Torklift Central is not responsible for the voiding of any warranty on any vehicle due to factory towing limitations. All vehicle warranties are the sole property and responsibility of the owner of the vehicle that the Torklift Central trailer hitch is installed upon. Torklift Central does not endorse towing behind any vehicle if the vehicles manufacturer states that towing is not recommended. Check your vehicle's owner's manual for the proper tow rating of your vehicle.

**ADDRESS:** 315 Central Ave N. Kent, WA 98032

**\*WARNING\*** Your vehicle may have a lower tow rating than this trailer hitch. If your vehicle's tow rating is less than the rated towing capacity on your Torklift Central trailer hitch, your trailer hitch capacity is limited to your vehicle's factory rated towing capacity.

**FOR EXAMPLE:** the label on your Torklift Central trailer hitch states it's capacity is rated for 500 pounds tongue weight and 5,000 pounds towing weight. However your vehicle's factory rated towing capacity is limited to only 350 pounds tongue weight and 3,500 pounds towing weight. In this example your maximum towing capacity of your Torklift Central trailer hitch is limited to 350 pounds tongue weight and 3,500 pounds towing weight as stated by your vehicle's maximum factory tow rating.

**\*DANGER\*** Never exceed your vehicle's manufacturer's recommended towing capacity which may be a lower rating than this trailer hitch

Unsure of your tow rating? Download our towing app from the app store to find your vehicles tow rating.  
[www.torkliftcentral.com/app.php](http://www.torkliftcentral.com/app.php)